

Should lifestyle choices influence  
clinical decisions regarding surgery?

Molly Nielsen



# NEWS

Home

UK

World

Business

Politics

Tech

Science

Health

Education

Entertainment & Arts

Video & Audio

More

England

Regions

York & North Yorkshire

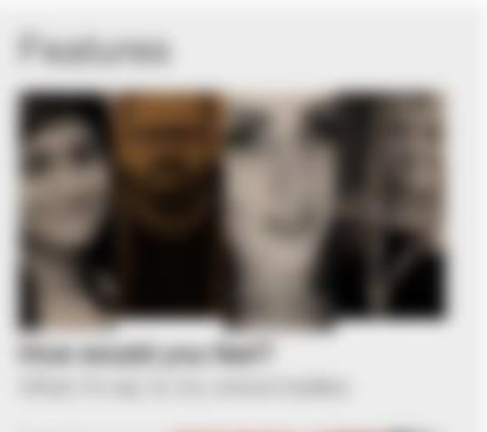
## Obese patients 'surgery ban' in York to be reviewed



A review of the current policy on obese patients waiting for surgery in the city of York is to be carried out by the local health authority.

The review is part of a wider effort to improve the health of the city's population and reduce the number of people who are obese.

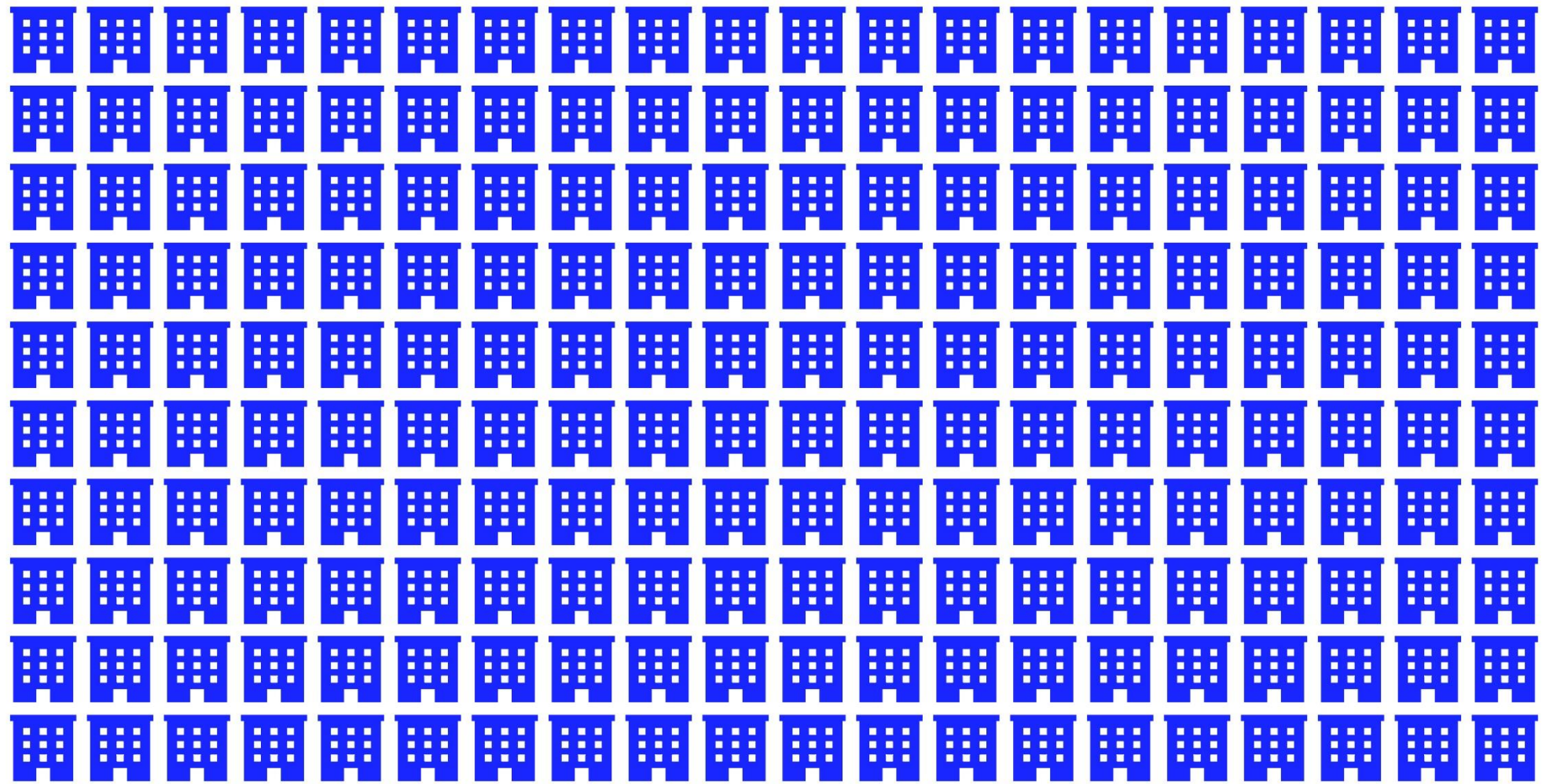
- Top stories**
- 1. **UK: Labour's 'big bang' plan to slash taxes**
- 2. **UK: Labour's 'big bang' plan to slash taxes**
- 3. **UK: Labour's 'big bang' plan to slash taxes**
- 4. **UK: Labour's 'big bang' plan to slash taxes**
- 5. **UK: Labour's 'big bang' plan to slash taxes**
- 6. **UK: Labour's 'big bang' plan to slash taxes**
- 7. **UK: Labour's 'big bang' plan to slash taxes**
- 8. **UK: Labour's 'big bang' plan to slash taxes**
- 9. **UK: Labour's 'big bang' plan to slash taxes**
- 10. **UK: Labour's 'big bang' plan to slash taxes**

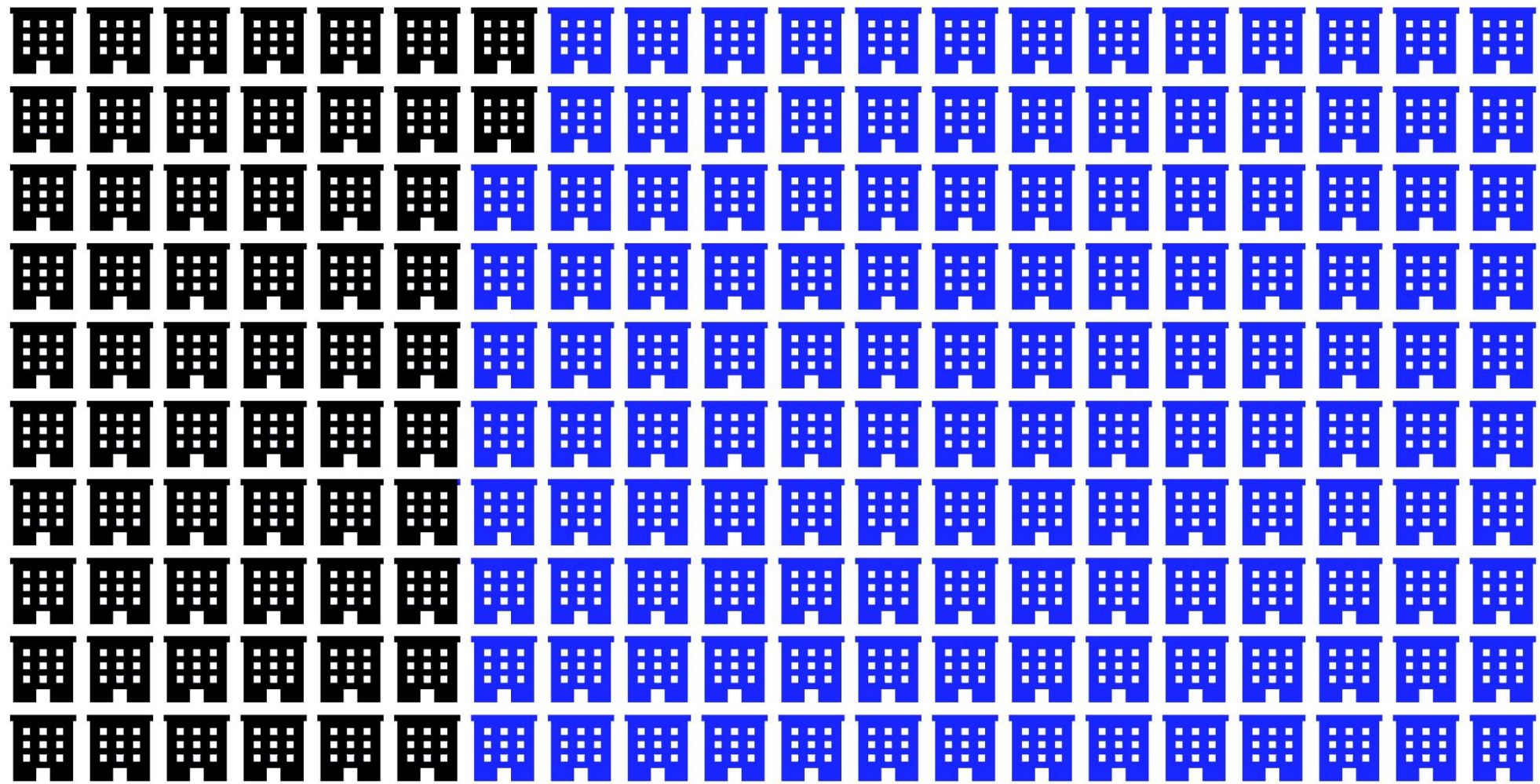


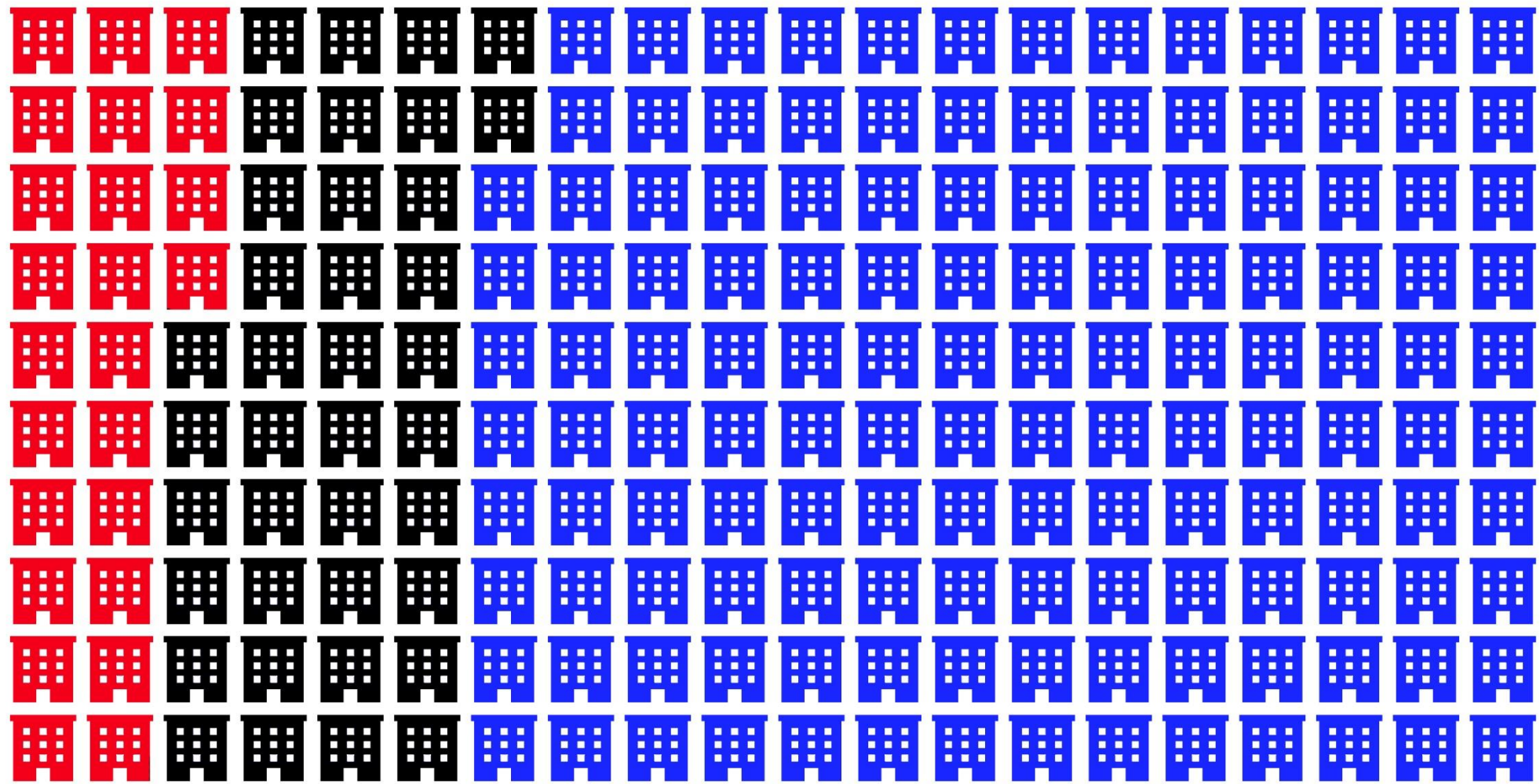


## Smokers and overweight patients:

Soft targets for NHS savings?













2013

# Commissioning Guide:



British  
Orthopaedic  
Association



Pain arising from the hip in adults

“age, gender, smoking, obesity and co-morbidity should not be barriers to referral”

2013

# Commissioning Guide:



British  
Orthopaedic  
Association



Pain arising from the hip in adults

“Total Hip Replacement (THR) is cost effective, returning 90% of patients to their previous job...

The National Tariff for THR is cheaper than long-term conservative management of osteoarthritis of the hip.”

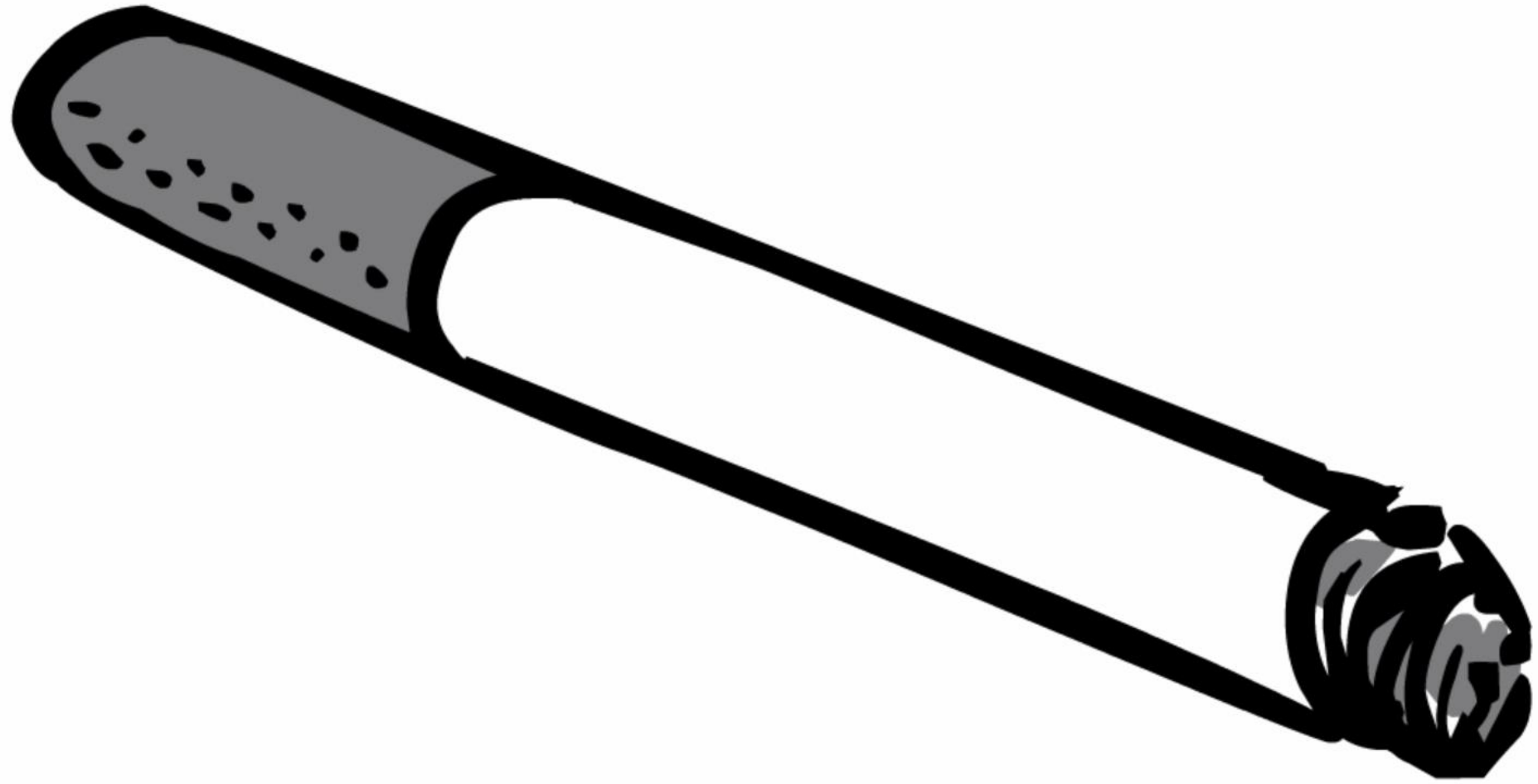
# NICE National Institute for Health and Care Excellence

## Osteoarthritis: care and management

Clinical guideline [CG177] Published date: February 2014

“Patient-specific factors (including age, sex, smoking, obesity, and comorbidities) should not be barriers to referral for joint surgery.”





## Varicose veins: diagnosis and management

Clinical guideline [CG168] Published date: July 2013

### 1.2 Referral to a vascular service

1.2.1 Refer people with bleeding varicose veins to a vascular service<sup>[3]</sup> immediately.

1.2.2 Refer people to a vascular service if they have any of the following.

- Symptomatic<sup>[4]</sup> primary or symptomatic recurrent varicose veins.
- Lower-limb skin changes, such as pigmentation or eczema, thought to be caused by chronic venous insufficiency.
- Superficial vein thrombosis (characterised by the appearance of hard, painful veins) and suspected venous incompetence.
- A venous leg ulcer (a break in the skin below the knee that has not healed within 2 weeks).
- A healed venous leg ulcer.













# NHSBT POLICY POL195/4

February 2015

alcoholic liver disease

non-alcoholic fatty liver disease

chronic viral hepatitis B, C, D

autoimmune liver diseases

genetic haemochromatosis

Wilson's disease

alpha – 1 antitrypsin deficiency

congenital liver disease

HCC

diuretic resistant ascites

chronic hepatic encephalopathy

intractable pruritus

hepatopulmonary syndrome

familial amyloid polyneuropathy

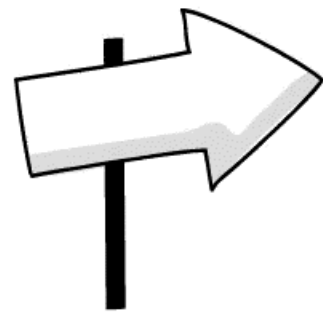
familial cholesterolaemia

polycystic liver disease

sickle cell hepatopathy

secondary sclerosing cholangitis





# REFERENCES

BBC News. *Obese patients 'surgery ban' in York to be reviewed*. 3 September 2016. Available from: <http://www.bbc.co.uk/news/uk-england-york-north-yorkshire-37265752>

NHS Clinical Commissioners. *About CCGs*. Available from: <http://www.nhscc.org/ccgs/>

NHS England. *NHS action to strengthen trusts' and CCGs' financial and operational performance for 2016/17*. Press release. 21 July 2016. Available from: <https://www.england.nhs.uk/2016/07/operational-performance/>

NHS Confederation. *Tough times, tough choices: being open and honest about NHS finances*. London: The NHS Confederation; 2013.

Royal College of Surgeons England. *Comment on Vale of York CCG plans to delay surgery*. Press release. 2 September 2016. Available from: <https://www.rcseng.ac.uk/news-and-events/media-centre/press-releases/comment-on-vale-of-york-ccg-plans-to-delay-surgery/>

Royal College of Surgeons England. *Smokers and Overweight Patients: Soft targets for NHS savings?* London: The Royal College of Surgeons; 2016.

British Hip Society, British Orthopaedic Association, Royal College of Surgeons England. *2013 Commissioning guide: pain arising from the hip in adults*. Available from: <https://www.boa.ac.uk/pro-practice/pain-arising-from-the-hip-in-adults-commissioning-guide/>

NICE. *Osteoarthritis: care and management, clinical guideline [CG177]*. February 2014. Available from: <https://www.nice.org.uk/guidance/cg177/chapter/1-Recommendations#referral-for-consideration-of-joint-surgery-2>

NICE. *Varicose veins: diagnosis and management, clinical guideline [CG168]*. July 2013. Available from: <https://www.nice.org.uk/guidance/cg168/chapter/1-recommendations#referral-to-a-vascular-service-2>

Buck D., Maguire D. *Inequalities in Life Expectancy: Changes over Time and Implications for Policy*. London: The King's Fund; August 2015.

NHS Blood and Transplant. *Policy POL195/4. Liver transplantation: selection criteria and recipient registration*. February 2015. Available from: [http://odt.nhs.uk/pdf/liver\\_selection\\_policy.pdf](http://odt.nhs.uk/pdf/liver_selection_policy.pdf)